



Teaching and Learning

UNIVERSITY OF COLORADO
COLORADO SPRINGS

Advisory Board

Color Key

- GREY = Adjunct Faculty
- ORANGE = Administrators
- BLUE = Instructional, Research, and Clinical (IRC) Faculty
- GREEN = Tenure Track Faculty
- PURPLE = University Staff
- RED = External Stakeholders
- BLACK = Affiliate Faculty

* Funded through fees, service charges, auxiliaries, grants, or gifts

Dr. Katie Anderson-Pence
Associate Dean

Associate Professor
(Teaching and Learning)

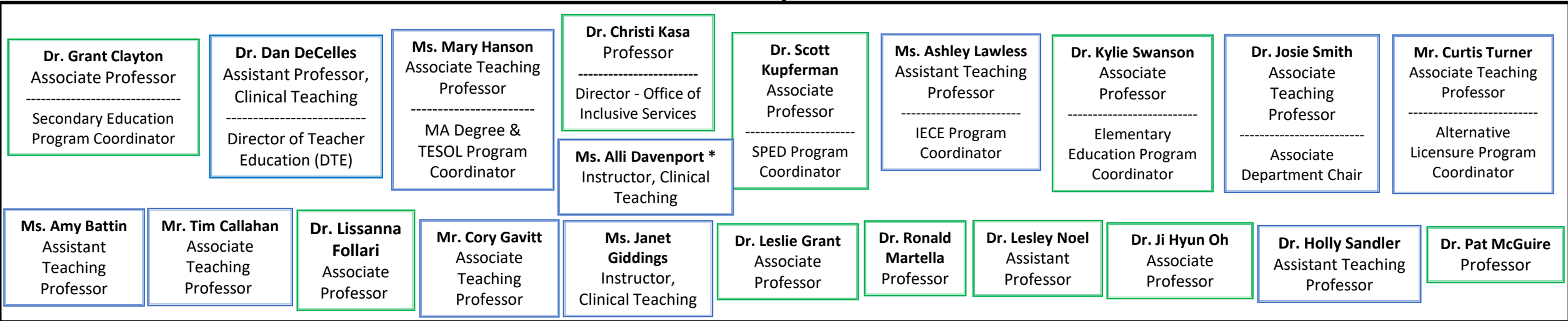
Dr. Joseph Wehrman
Interim Dean

Dr. Sarah Long
Assistant Dean and
Director of Student Affairs

Dr. Monica Yoo
Associate Professor

Department Chair

Ms. Emily O'Keefe
Academic Support
Professional



Adjunct Clinical Supervisors
(Dotted line report to the Director of Teacher Education)

Graduate Assistants
(report to various faculty supervisors)

Research Affiliate

Adjunct Lecturers
(Dotted line report to the Associate Department Chair)